



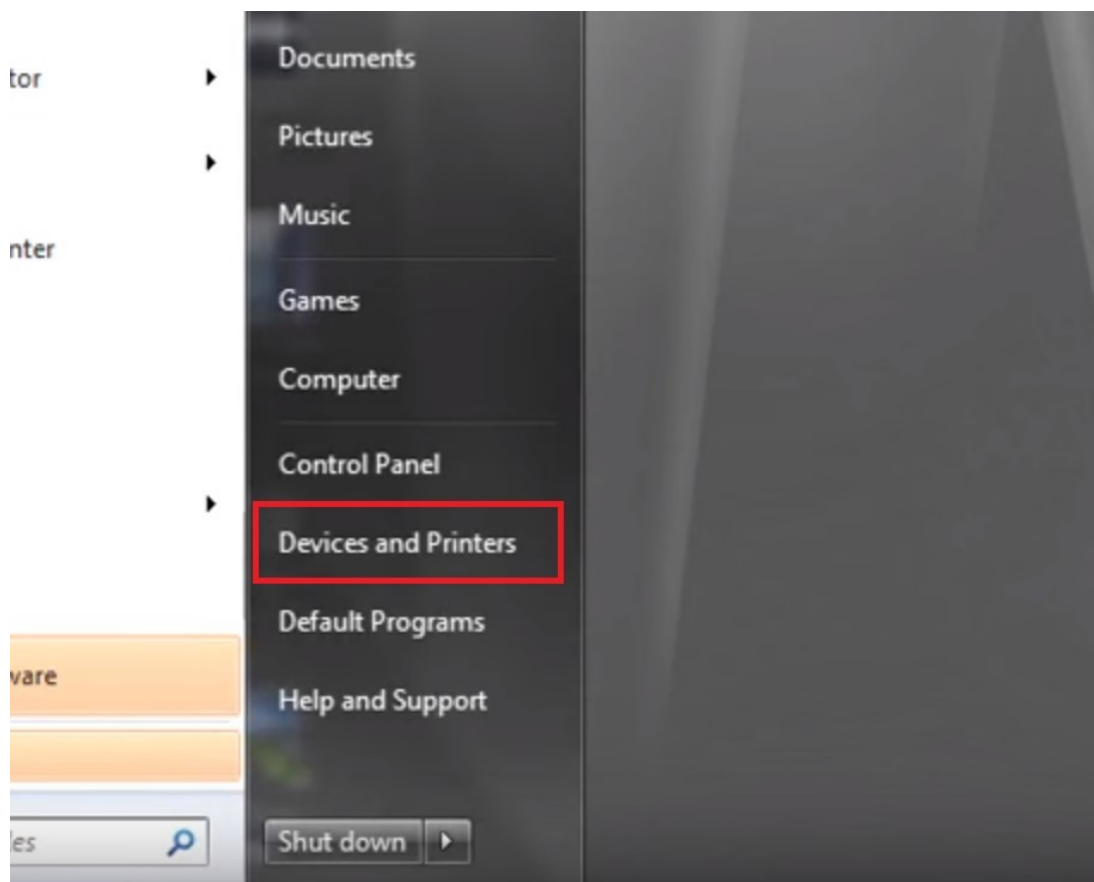
Setup Print Device for RE3 in Windows

Select your Version

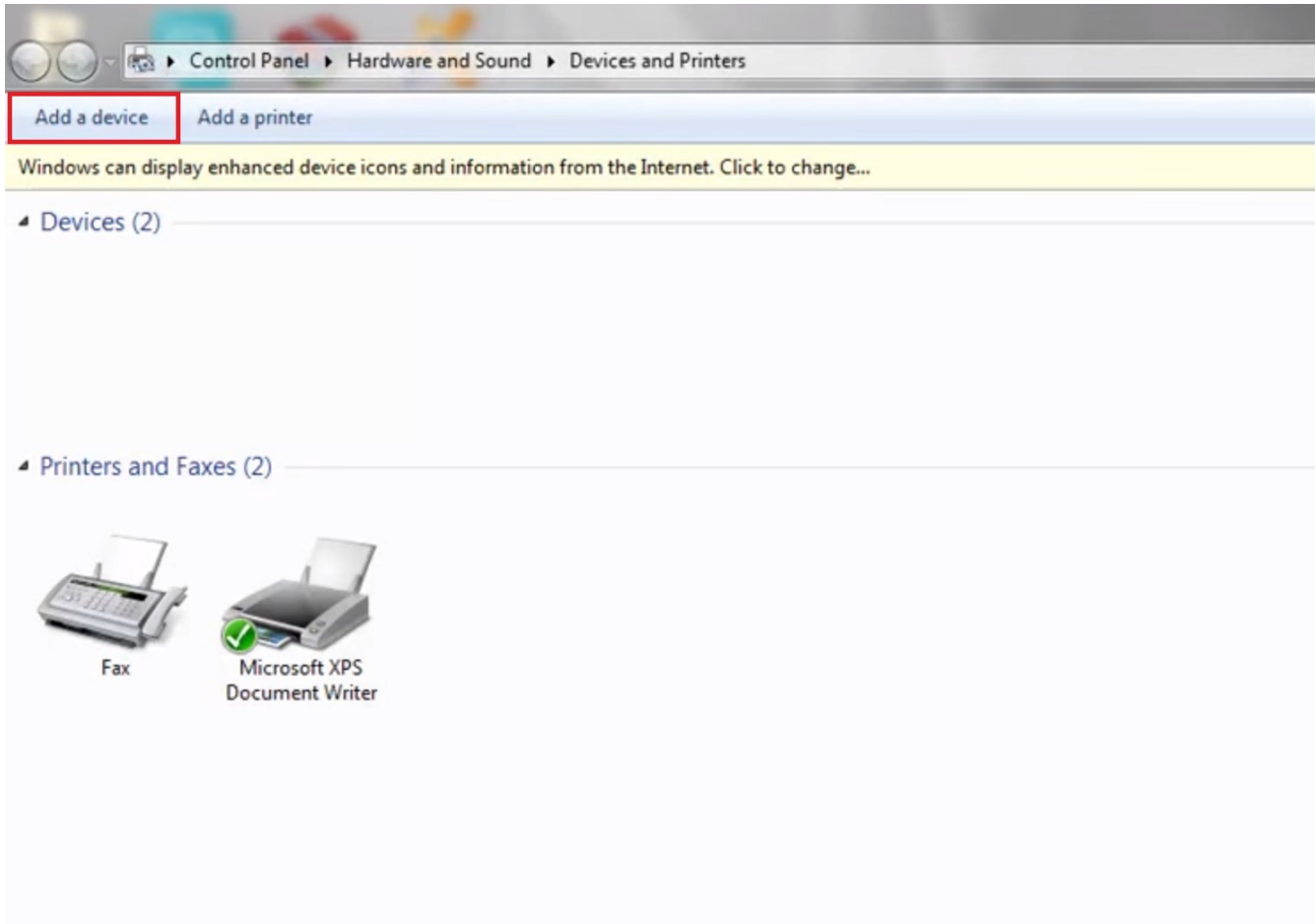
- **Windows 7 & Vista**
- **Windows 10**
- **Alternative Method using Windows Explorer**

Setup Print Device in Windows 7

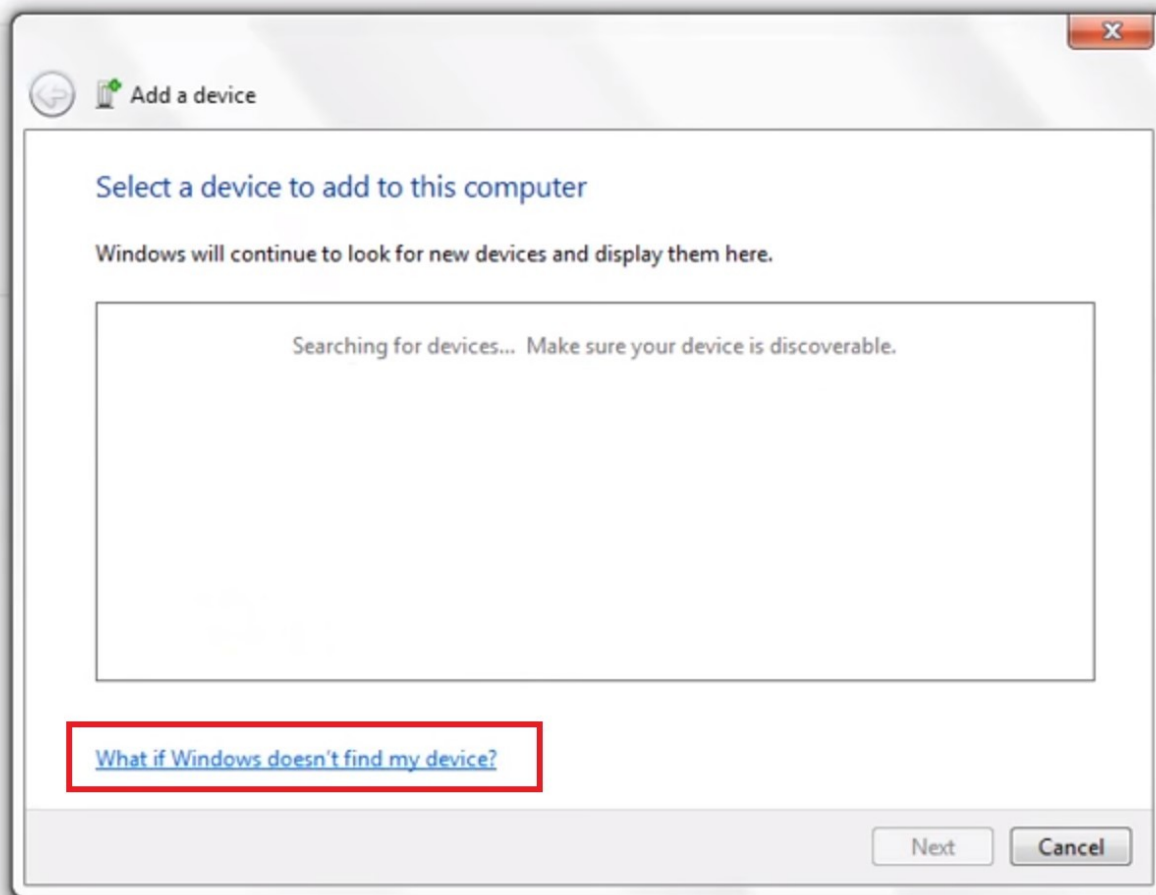
1. Click the Windows Start Button and then click on "**Devices and Printers**"



2. Click on "Add a device"



3. After a few moments you should see "**What if Windows doesn't find my device?**" - Select this



4. Type in "\\XXX.XXX.XXX.XXX\Full Spectrum Engineering Driver" within this field. Replace the X's with the IP address of the Machine and click "Next"

← Add Printer

Find a printer by other options

My printer is a little older. Help me find it.

Select a shared printer by name

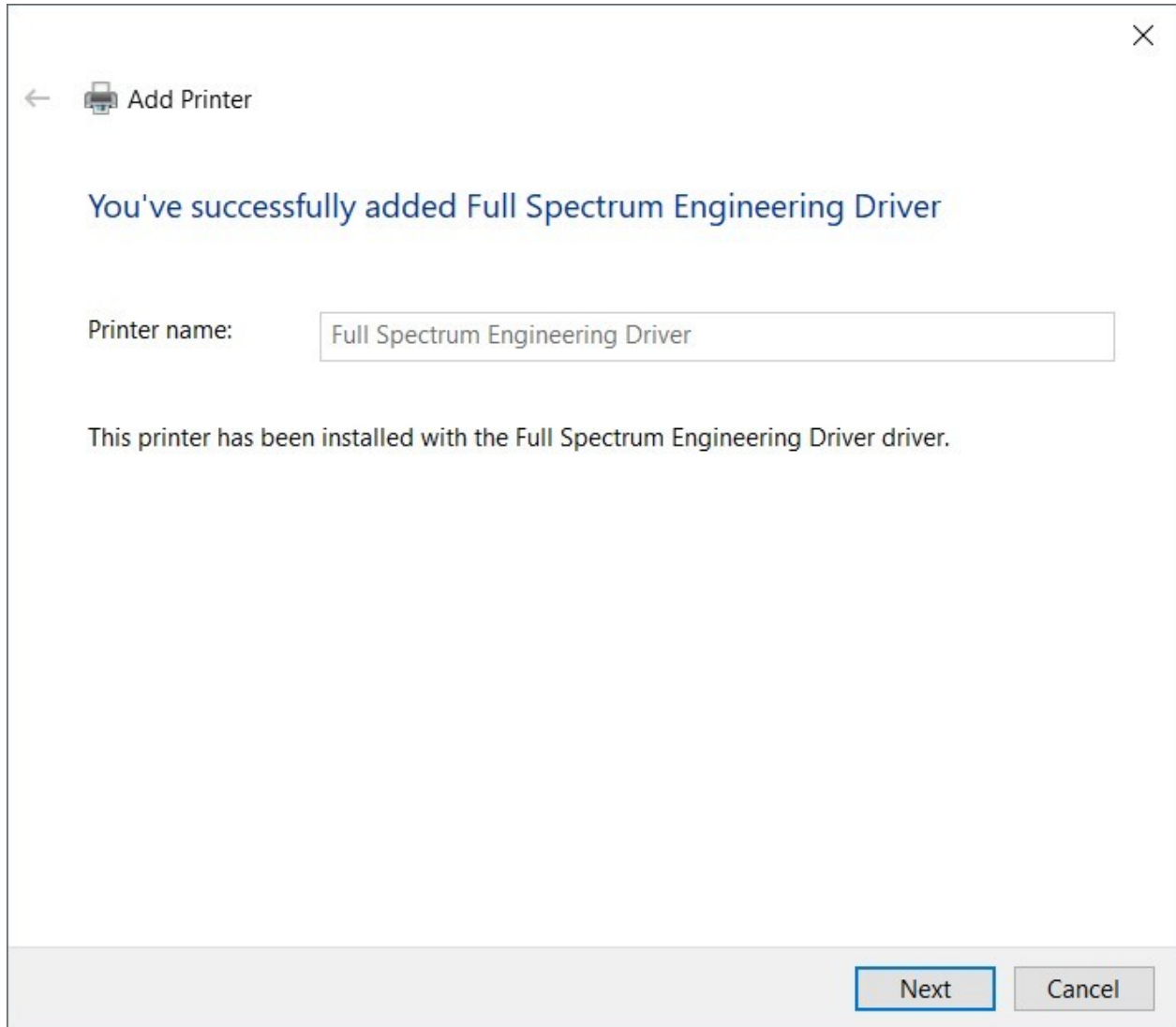
Example: \\computername\printername or
http://computername/printers/printername/.printer

Add a printer using a TCP/IP address or hostname

Add a Bluetooth, wireless or network discoverable printer

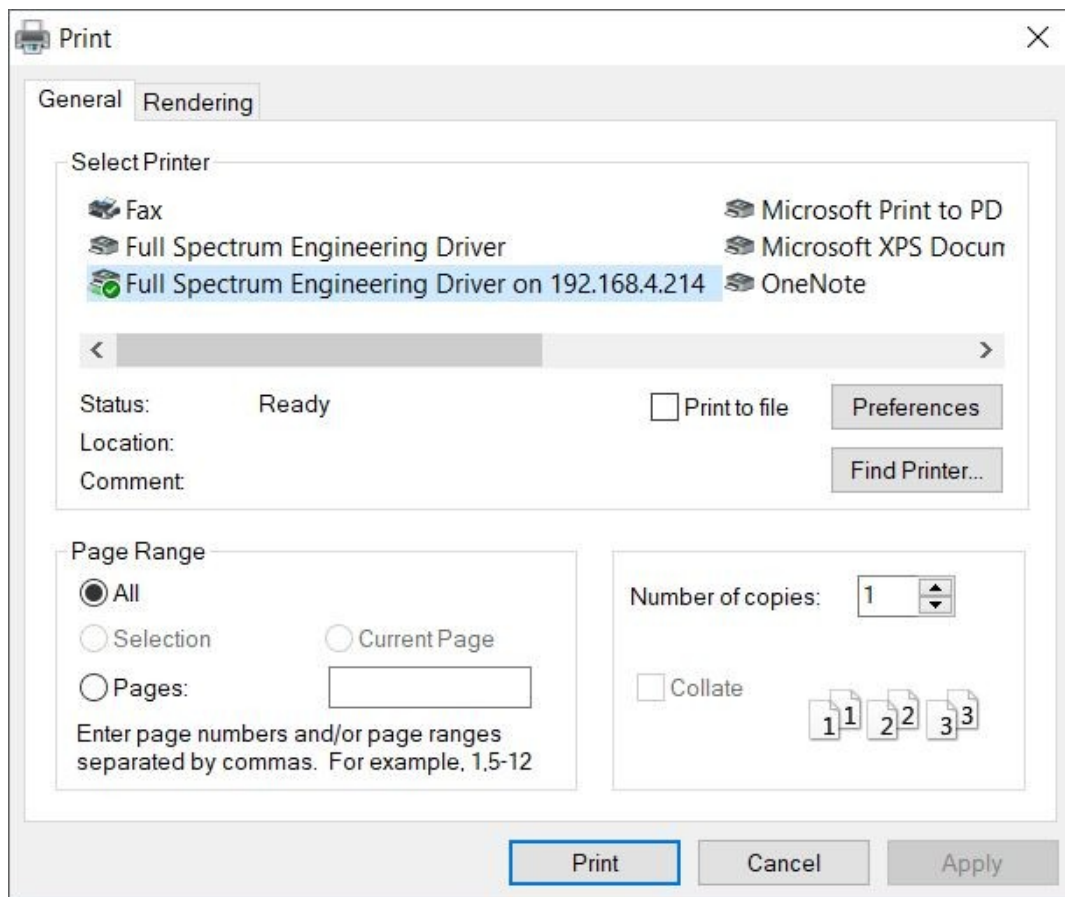
Add a local printer or network printer with manual settings

5. The dialog box should now state you've successfully added the Device and you may click "Next" then "Finish" to finalize the process.



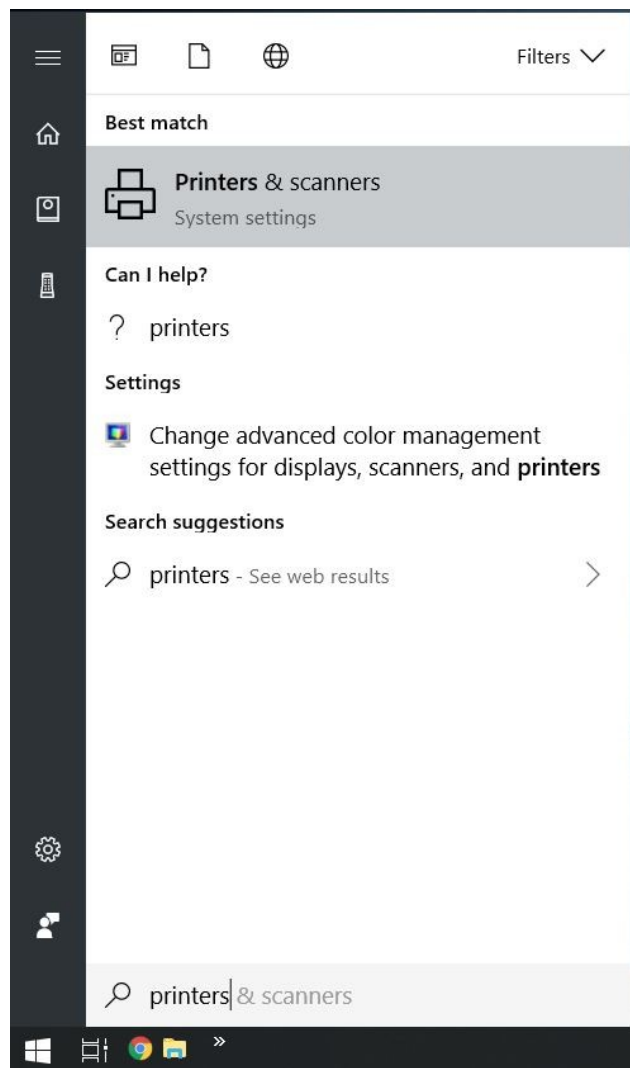
Print Device is now added successfully within Windows

6. You may click on **File> Print** within your chosen design software and select "**Full Spectrum Engineering Driver**" on the list.

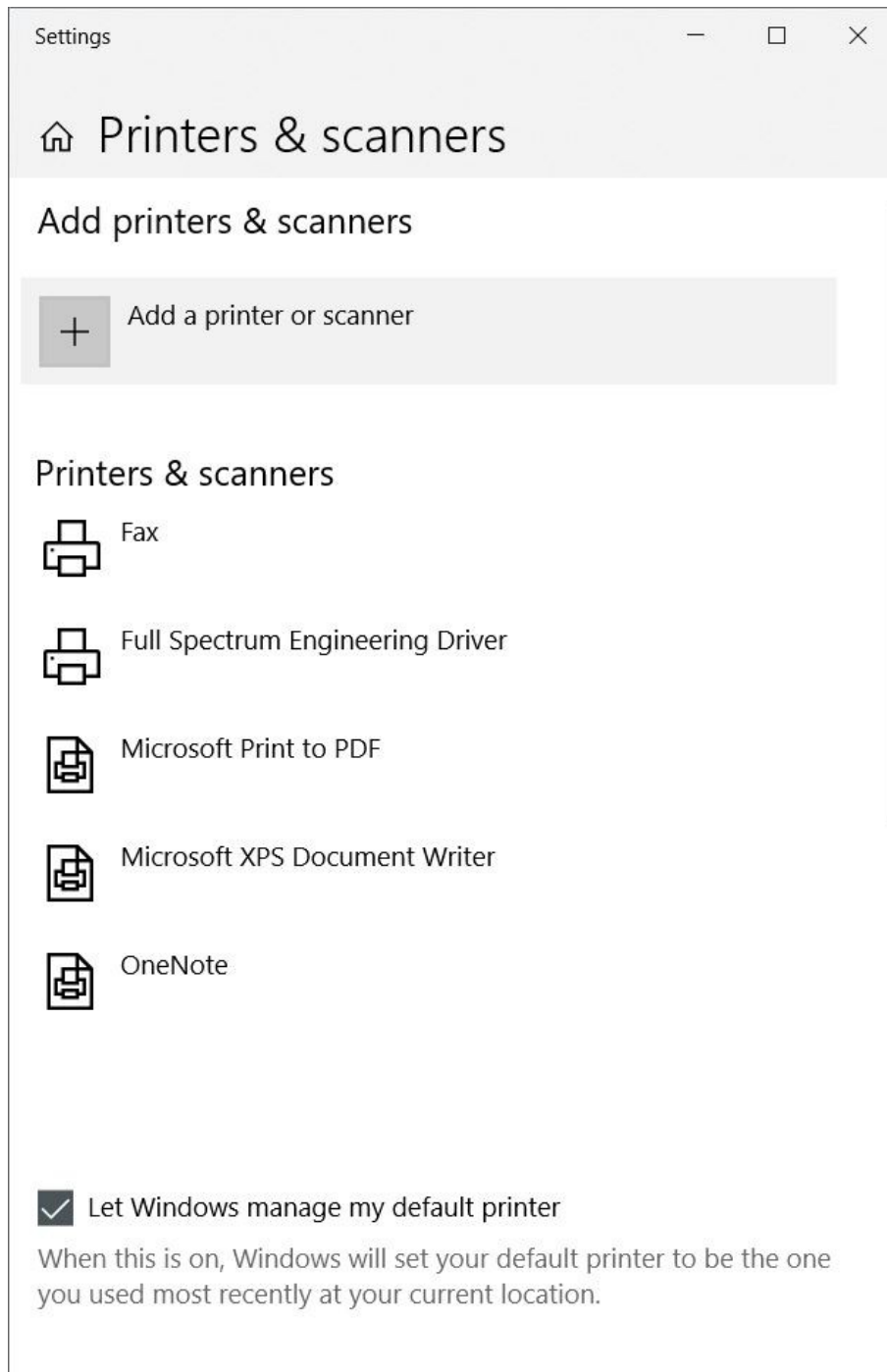


Setup Print Device in Windows 10

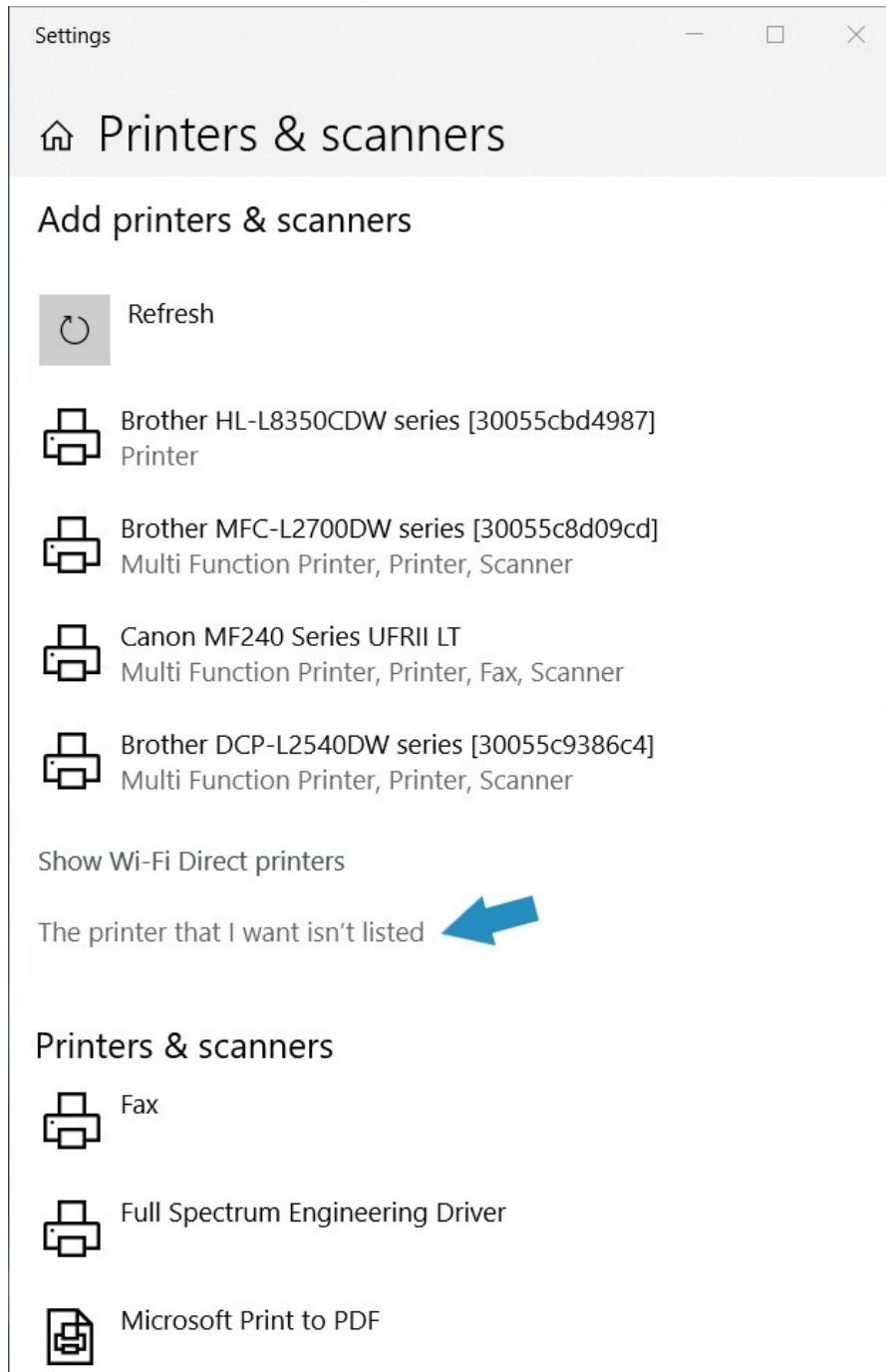
1. Click the Windows Start Button and Type "**Printers**" which will show "**Printers & Scanners**" on the list to select.



2. Click on **Add a printer or scanner**



3. After a few moments you should see "The Printer that I want isn't listed" - Select this



4. Type in "\\XXX.XXX.XXX.XXX\Full Spectrum Engineering Driver" within this field. Replace the X's with the IP address of the Machine and click "Next"

← Add Printer

Find a printer by other options

My printer is a little older. Help me find it.

Select a shared printer by name

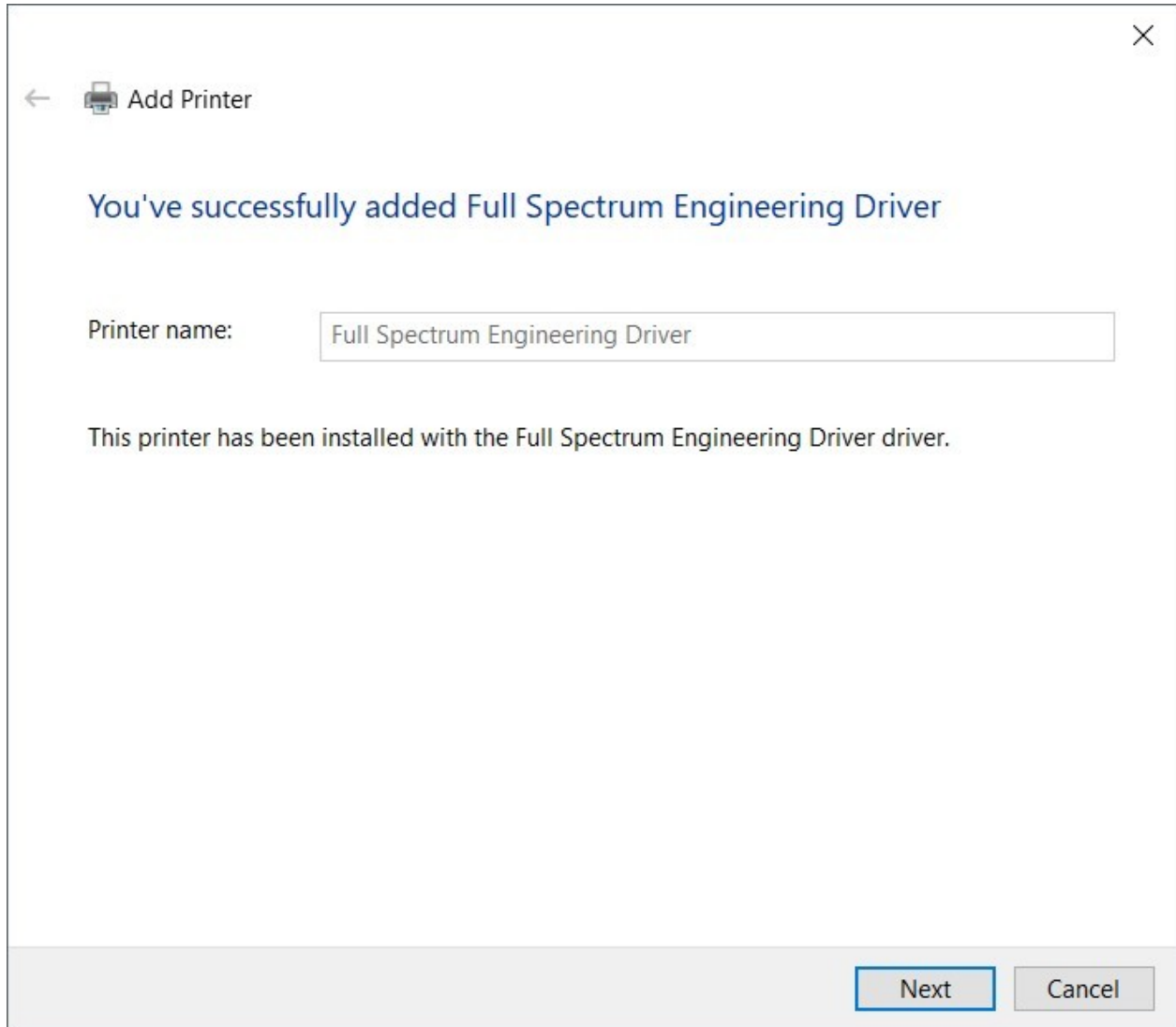
Example: \\computername\printername or
http://computername/printers/printername/.printer

Add a printer using a TCP/IP address or hostname

Add a Bluetooth, wireless or network discoverable printer

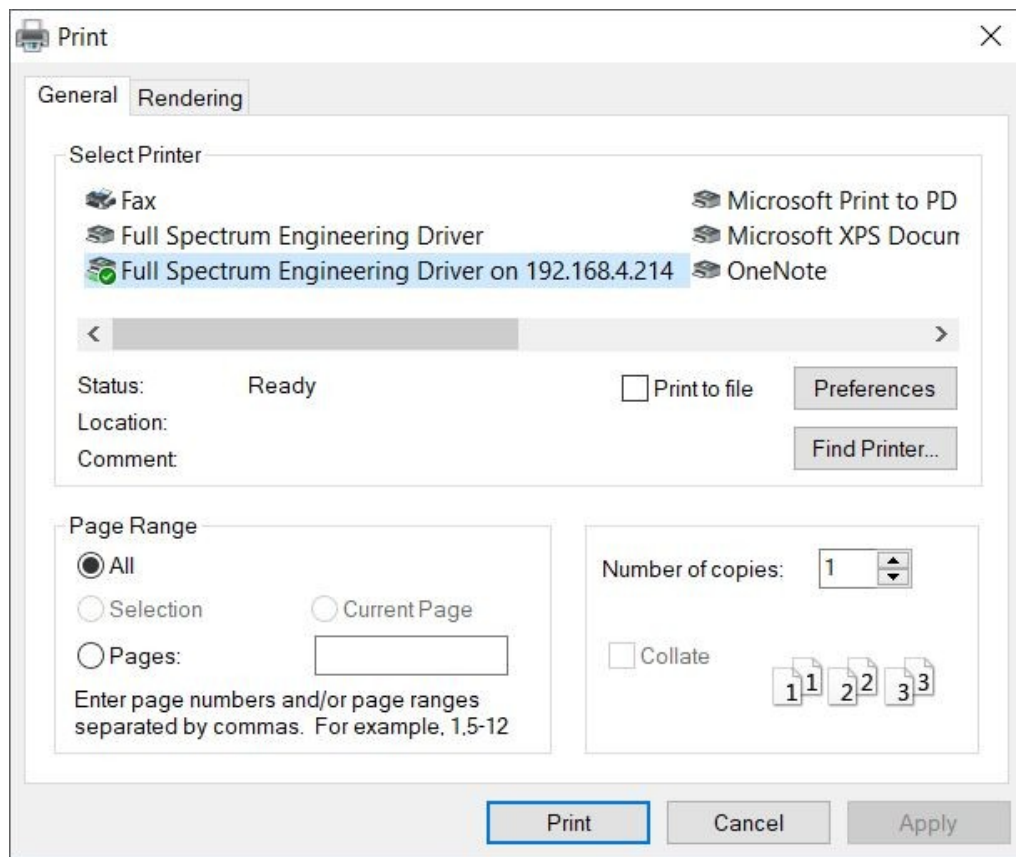
Add a local printer or network printer with manual settings

5. The dialog box should now state you've successfully added the Device and you may click "Next" then "Finish" to finalize the process.



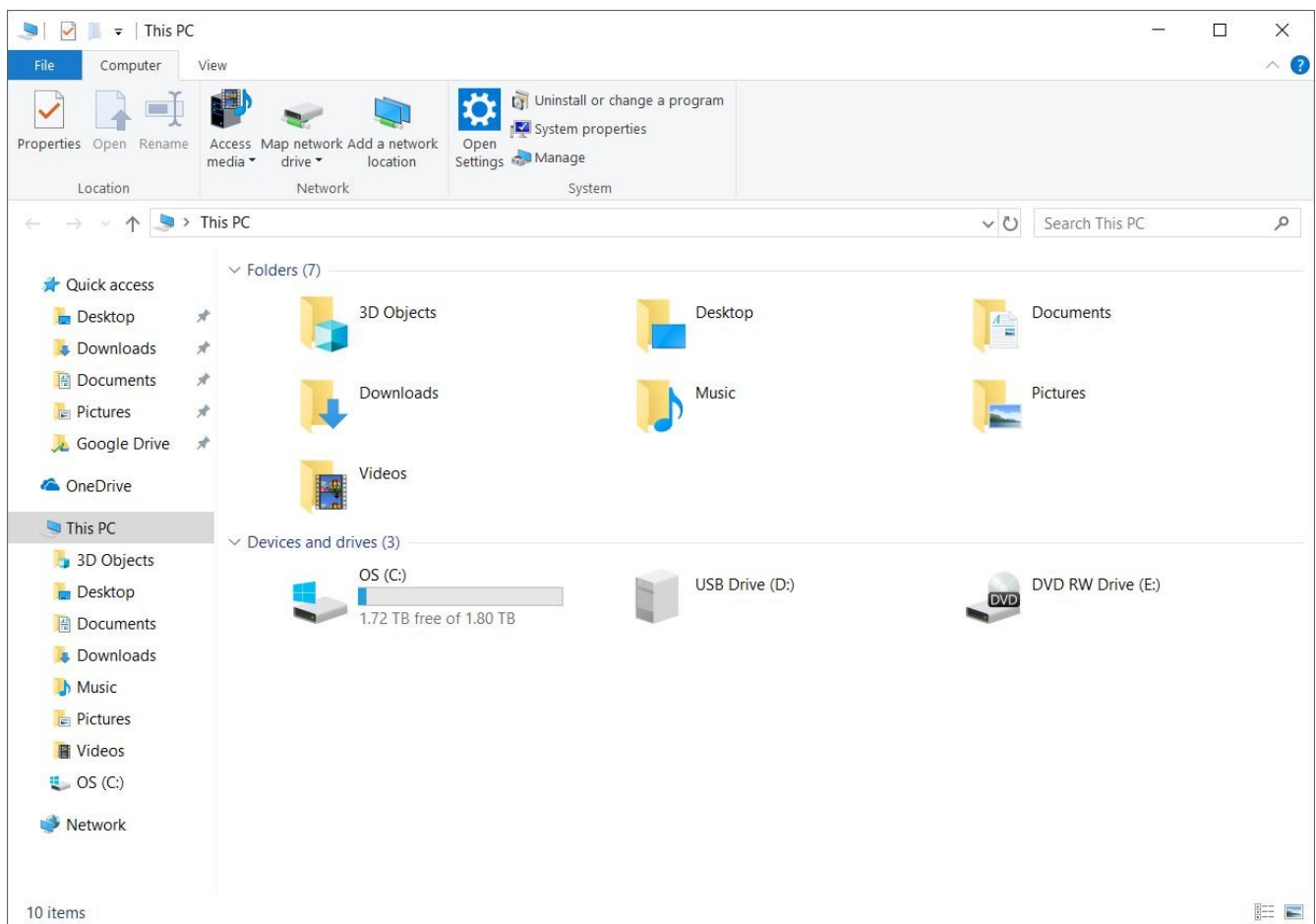
Print Device is now added successfully within Windows

6. You may click on **File> Print** within your chosen design software and select “**Full Spectrum Engineering Driver**” on the list.

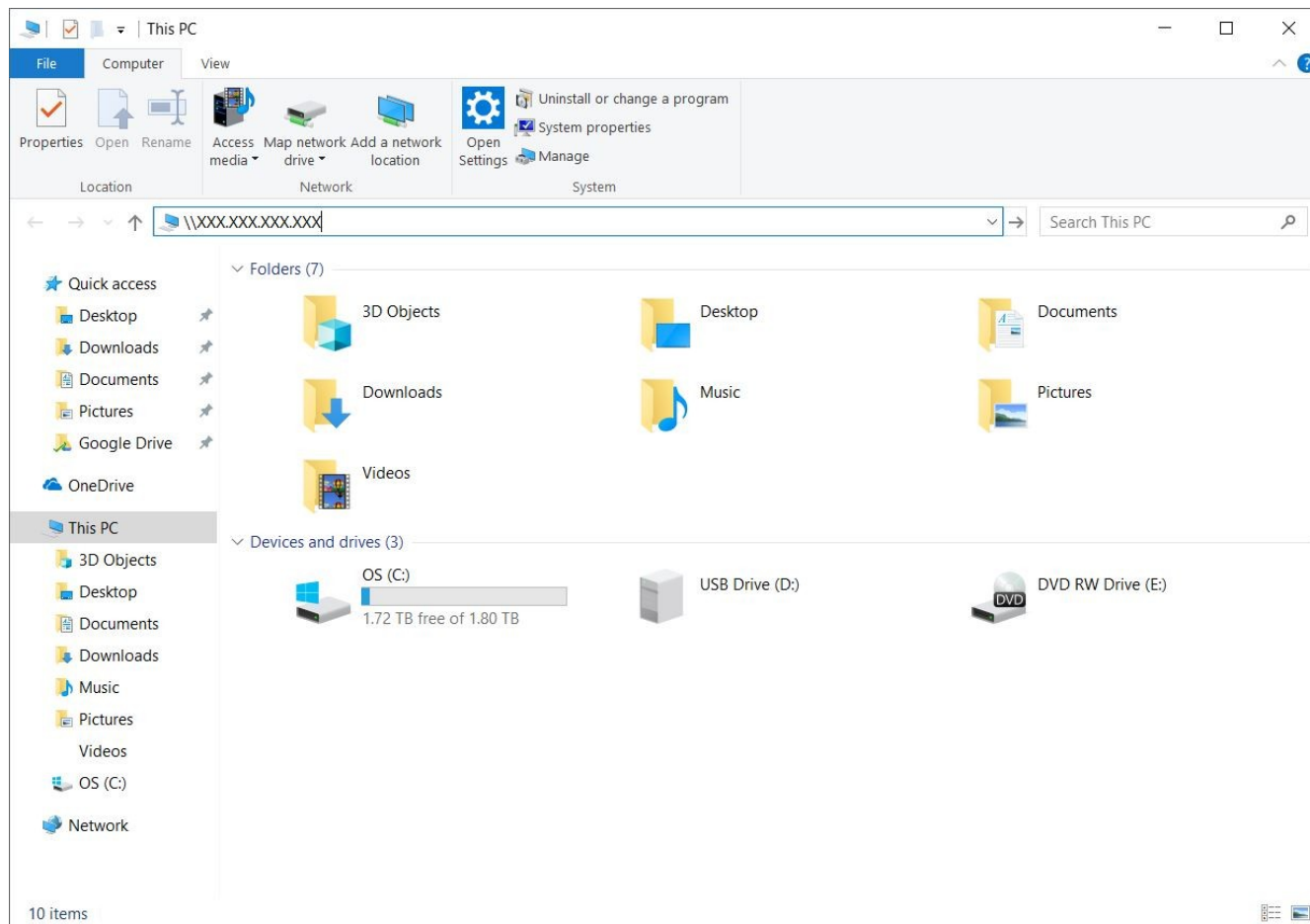


Setup Print Device using Alternative Method

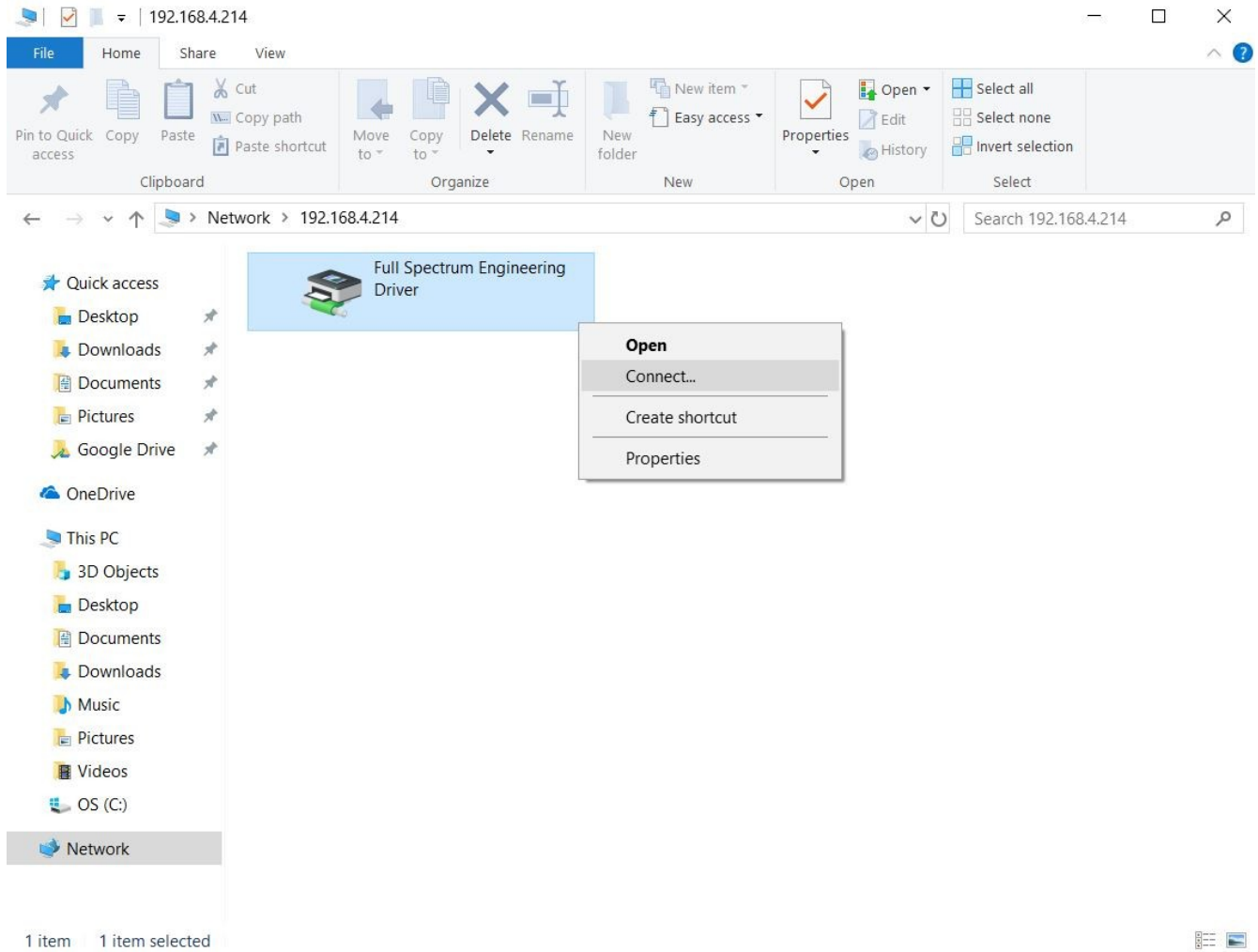
1. Open **Windows Explorer** or push **Ctrl + E** on your keyboard



2. Type in `\\XXX.XXX.XXX.XXX` in the Address Bar field. Replace the X's with the IP address of your machine and push "Enter"



3. "Full Spectrum Engineering Driver" should appear. Right-click this and click "Connect..."



Print Device is now added successfully within Windows

4. You may click on **File> Print** within your chosen design software and select "**Full Spectrum Engineering Driver**" on the list.

